



Liftco Load Limiter

- **Load limiter for overhead cranes and hoists**
 - **Quick and easy installation**
 - **Available for all capacity cranes**
 - **Specialised limiters available for heavy duty applications**
 - **Can be configured to detect slack rope conditions**
 - **Available preset or easily calibrated on site**
 - **Automatic reset by reducing the load**
 - **Protects against overloading of crane and supporting structures**
 - **Prevents accidents ensuring safer working conditions**
 - **Reduces maintenance costs**
 - **Minimizes down time**
-

SAFETY • RELIABILITY • ACCURACY

SPECIFICATION

BODY

Models LLL18, LLL28, LLL45, LLL60, LLL80, LLL150 and LLL200:
Cast from high grade LM4 aluminium with high proof and tensile strength with excellent machining properties.

DISC SPRINGS

To German standards DIN2093 and 2092. This allows for repeatability of set point of within 1%.

DIMENSIONS

A compact load cell that when fitted does not affect the height of lift.

GUIDES

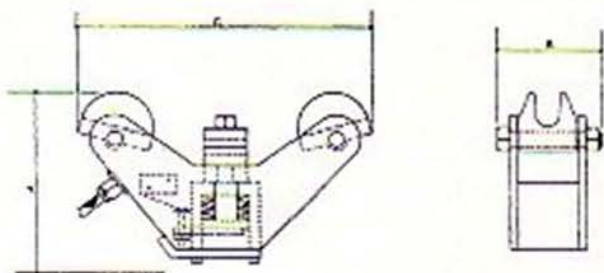
Cast from LM4 aluminium. Guides provide a higher degree of accuracy due to the increased contact surface between the guides and crane/hoist rope.

LIMIT SWITCH

A heavy duty microswitch manufactured to EC specifications able to work up to 220 volts AC

PAINTING SPECIFICATION

Anti corrosion cleaned to remove surface scale, powder coated and electrostatically applied to a dft. of 50-75 microns, oven post cured at 200°C for 20 minutes.



MODEL	MAX. LOAD	HEIGHT A	WIDTH B	LENGTH C	WEIGHT	ROPE DIAMETER
LLL 18	1400kgs	100	60	140	1.3kg	5 - 13mm
LLL 28	2400kgs	100	70	190	1.5kg	10 - 14mm
LLL 45	4500kgs	150	90	250	3.6kg	13 - 20mm
LLL 60	6000kgs	150	90	250	3.8kg	20 - 24mm
LLL 80	8000kgs	215	125	375	7.0kg	20 - 30mm
LLL 150	15000kgs	215	125	375	7.3kg	26 - 30mm

IMPORTANT NOTE: Above rope loads for use on class 1 & 2 factory duty cranes used in accordance with BSS 466 of 1984, M5 rating. Consult factory for class 3 & 4 heavy duty applications.