

# Liftco Load Limiter & Top Limit Switch

- Load limiter for overhead cranes and hoists
- Top limit switch can be used as service limit switch or as an extra safety back-up top limit
- Quick and easy installation
- Available for all capacity cranes
- Specialised limiters available for heavy duty applications
- Can be configured to detect slack rope conditions
- Available preset or easily calibrated on site
- Automatic reset by reducing the load
- Protects against overloading of crane and supporting structures and protects against bottom block overwind
- Prevents accidents ensuring safer working conditions and reduces maintenance costs
- Available as a combination or separately

**SAFETY • RELIABILITY • ACCURACY**

# SPECIFICATION

## BODY

Models LLL18, LLL28, LLL45, LLL60, LLL80, LLL150 and LLL200:  
Cast from high grade LM4 aluminium with high proof and tensile strength with excellent machining properties.

## DISC SPRINGS

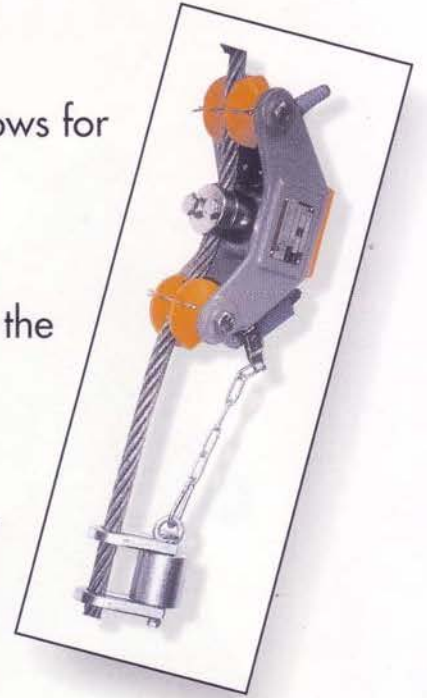
To German standards DIN2093 and 2092. This allows for repeatability of set point of within 1%.

## DIMENSIONS

A compact load cell that when fitted does not affect the height of lift.

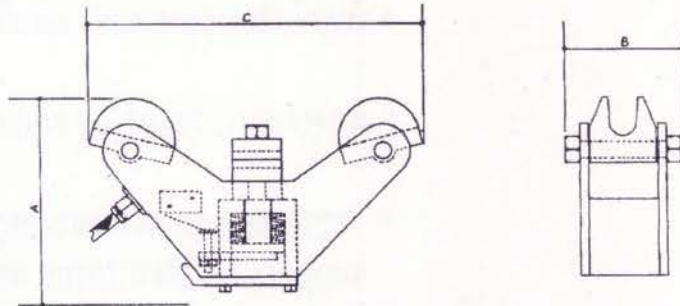
## GUIDES

Cast from LM4 aluminium. Guides provide a higher degree of accuracy due to the increased contact surface between the guides and crane/hoist rope.



## PAINTING SPECIFICATION

Anti corrosion cleaned to remove surface scale, powder coated and electrostatically applied to a dft. of 50-75 microns, oven post cured at 200°C for 20 minutes.



MODEL	MAX. LOAD	HEIGHT A	WIDTH B	LENGTH C	WEIGHT	ROPE DIAMETER
LLL 18	1400kgs	100	60	140	1.3kg	5 - 13mm
LLL 28	2400kgs	100	70	190	1.5kg	10 - 14mm
LLL 45	4500kgs	150	90	250	3.6kg	13 - 20mm
LLL 60	6000kgs	150	90	250	3.8kg	20 - 24mm
LLL 80	8000kgs	215	125	375	7.0kg	20 - 30mm
LLL 150	15000kgs	215	125	375	7.3kg	26 - 30mm

**IMPORTANT NOTE:** Above rope loads for use on class 1 & 2 factory duty cranes used in accordance with BSS 466 of 1984, M5 rating. Consult factory for class 3 & 4 heavy duty applications.